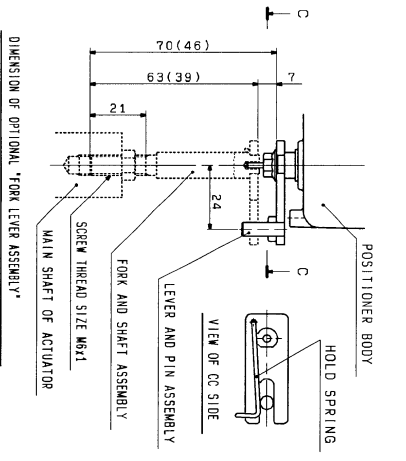
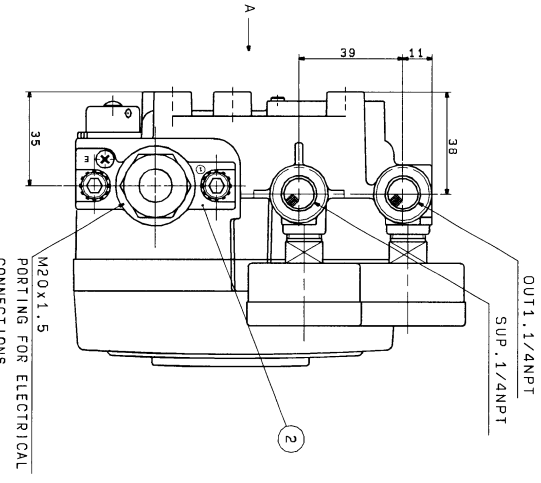
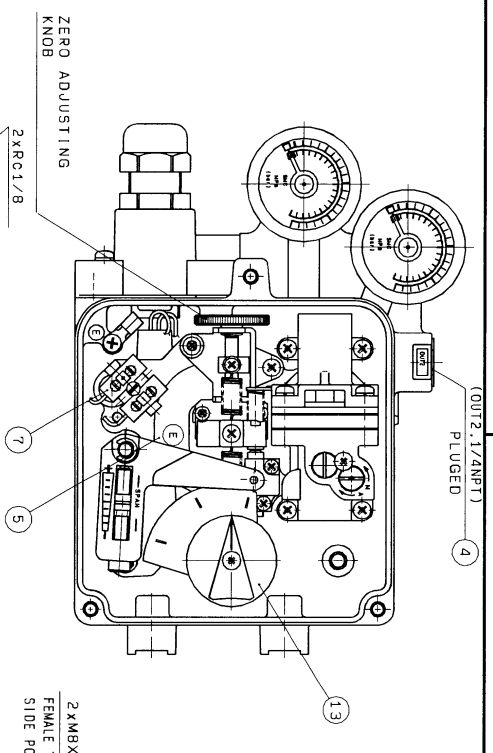


**SPECIFICATIONS**

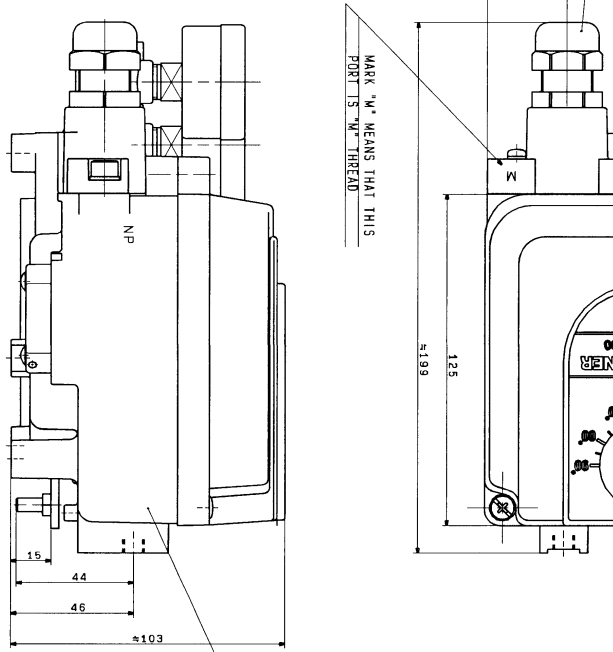
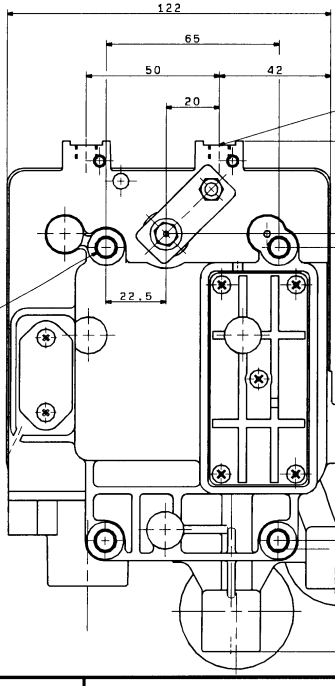
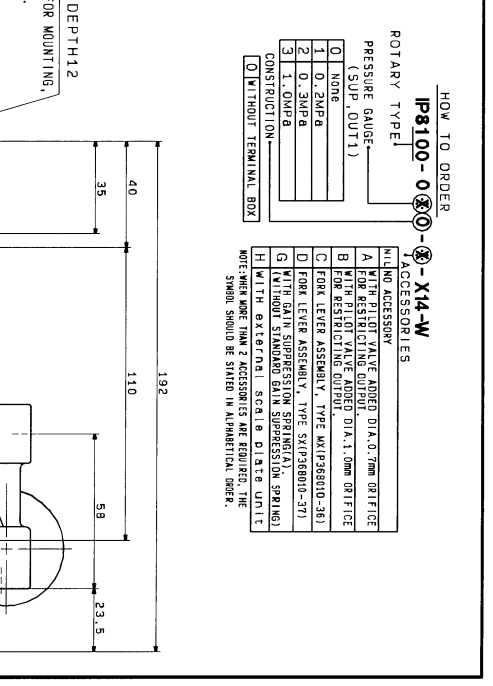
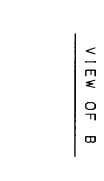
INPUT CURRENT	0-20mA DC, 4-20mA AC
INPUT RESISTANCE	250Ω/50-Ω/200Ω/1kΩ/10kΩ/100kΩ/1MΩ/10MΩ/100MΩ/1GΩ
SUPPLY AIR PRESSURE	0.14-0.7MPa
STANDARD STROKE	60-100 (THE STROKE IS ADJUSTABLE WITHIN 0.5% OF FULL SPAN)
SENSITIVITY	WITHIN 0.5% OF FULL SPAN
LINEARITY	WITHIN 1% OF FULL SPAN
HYSTEREISIS	WITHIN 10.5% OF FULL SPAN
REPEATABILITY	WITHIN 0.1% F.S. 27°C
TEMPERATURE COEFFICIENT	200/100/50/25/0/25/50/100/150/200/250/300/350/400/450/500/550/600/650/700/750/800/850/900/950/1000
OUTPUT FLOW	WITHIN 11% (STANDARD) (M1 SUP-0.2MPa)
AIR CONSUMPTION	CE 0342 20G EXE/DICTS/7/6
EXPLOSION-PROTECTED	-20°C-60°C (T15), -20°C-60°C (T16)
APPROVED NO.	KEMA 03ATEX 1119
CLASSIFICATION OF DEGREE OF PROTECTION	IP67
AIR CONNECTIONS	1/2ANPT (FEMALE)
ELECTRICAL CONNECTIONS	M20x1.5 (FEMALE)
MASS	APPROX. 2.4KG

NOTE: 1. (ANR) SHOWS STANDARD AIR. (U15 B 0120)  
2. IF 1/2 SPLIT RANGE IS USED, ADD 1% TO THE ABOVE CHARACTERISTICS.

NOTE: TORQUE MOTOR HAS AN INDICATION OF ON IT'S MAGNET.



NOTE: SPECIFIC ELECTRICAL CONNECTIONS SHOULD BE MADE IN ACCORDANCE WITH THE INSTRUCTIONS PROVIDED IN THE USER MANUAL. THE SMC POSITIONER MODEL IP100 IS A STANDARD INSTRUMENT AND NOT A TOOL.



- HOW TO ORDER**  
**IP8100-0-0-0-X14-W**
- ROTARY TYPE I  
 PRESSURE GAUGE (SUP. OUIT1)  
 0 NONE  
 1 0.2MPa  
 2 0.3MPa  
 3 1.0MPa  
 CONSTRUCTION  
 WITHOUT TERMINAL BOX
- ACCESSORIES  
 WITHIN ACCESSORY  
 A FOR RESTRICTING OUTPUT  
 B WITH PILOT VALVE ADDED DIA.1.0mm ORIFICE  
 C FOR RESTRICTING OUTPUT  
 D FORK LEVER ASSEMBLY TYPE SX (P268010-381)  
 E WITH GAIN SUPPRESSION SPRING (S1)  
 F WITH GAIN SUPPRESSION SPRING (S2)  
 G WITH GAIN SUPPRESSION SPRING (S3)  
 H WITH EXTERNAL SCALE DISPLAY UNIT  
 NOTE: SPECIFY MORE THAN 2 ACCESSORIES ARE REQUIRED. THE SYMBOL SHOULD BE STATED IN ALPHABETICAL ORDER.

ALL PARTS EXCEPT SPECIFIED ONES ARE SAME AS THOSE OF OUR STANDARD IP8100-0-0-1

13	IP80810-19	INDICATING PLATE UNIT	1
12	IP85010-45	FEEDBACK SIGNAL UNIT	1
11	IP85010-44	BODY COVER UNIT	1
10	IP268010-37	FORK LEVER ASSEMBLY TYPE SX	1
9	IP268010-36	FORK LEVER ASSEMBLY TYPE MX	1
8	INI-565-0-24	SPECIAL (MATERIAL) STANDARD	POLYESTER 1
7	IP80810-67	TERMINAL UNIT	1
6	IP83-X-01-X101	PRESSURE GAUGE	2 (R1/8" (9.525mm))
5	IP85010-26	TORQUE MOTOR UNIT	1 WITH 3 IDIODE
4	IP85010-26	TORQUE MOTOR UNIT	1 WITH 3 IDIODE
3	IP85010-26	TORQUE MOTOR UNIT	1 WITH 3 IDIODE
2	INI-565-0-15	JOINT	ALUMINUM 1 M20X1.5
1	IP8501001-10	BODY	ALUMINUM 1 SHIM/2ANPT