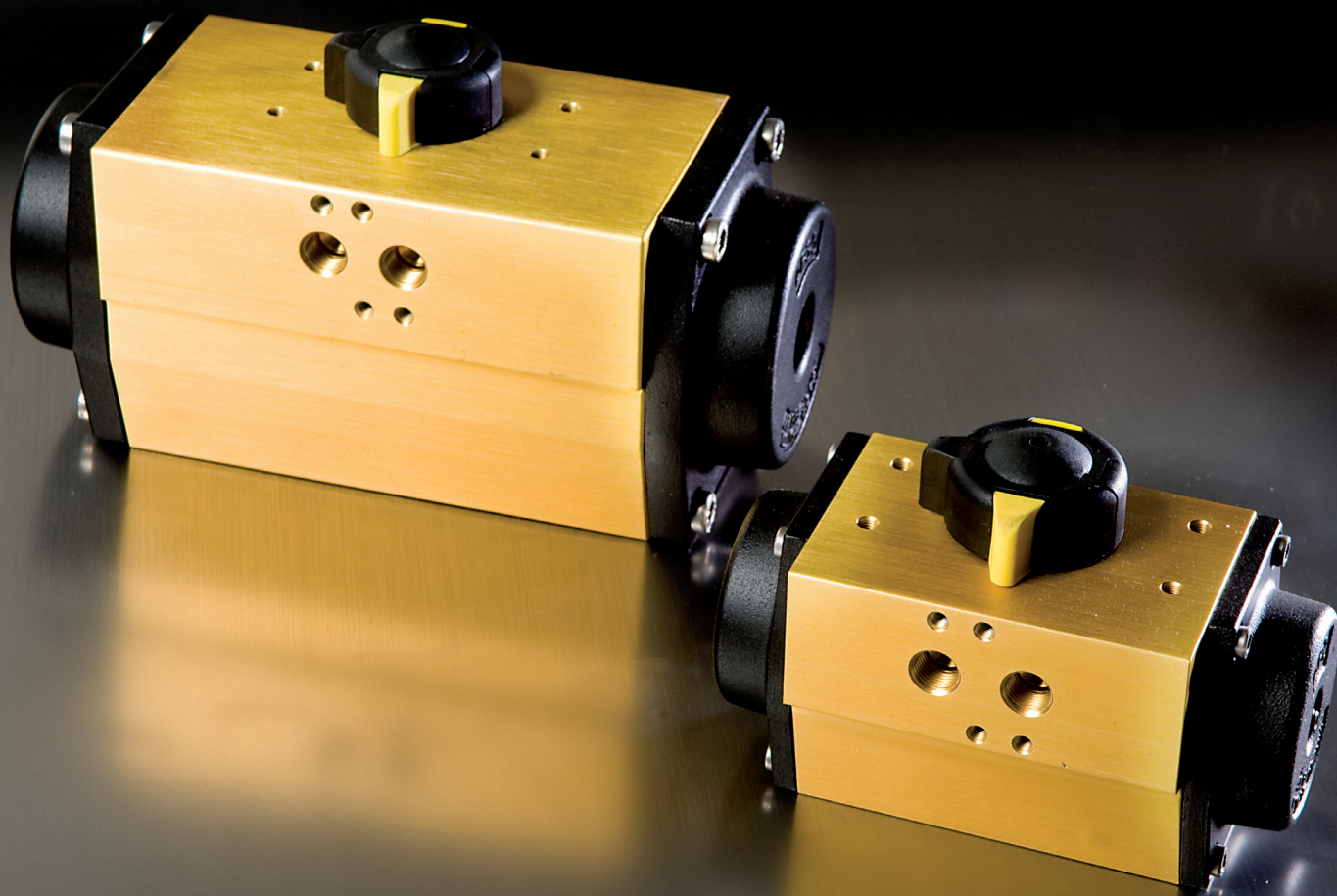
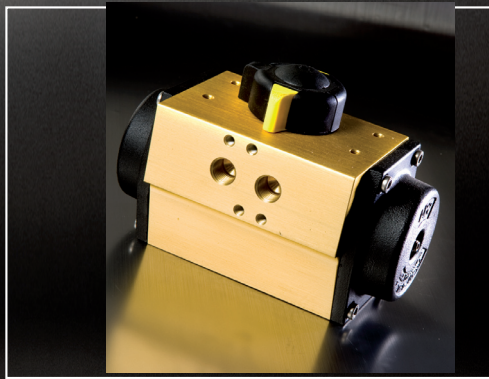
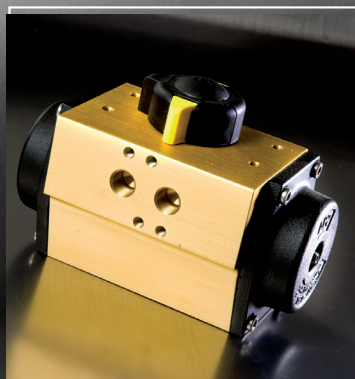


Attuatore pneumatico serie AP

ATTUATORE PNEUMATICO - ALLUMINIO

PNEUMATIC ACTUATOR - ALUMINIUM

ACTUADOR NEUMATICO - ALUMINIO



ATTUATORE PNEUMATICO - ALLUMINIO / TECNOPOLIMERO
 PNEUMATIC ACTUATOR - ALUMINIUM / TECHNOPOLYMER
 ACTUADOR NEUMATICO - ALUMINIO / TECNOPOLIMERO

CARATTERISTICHE PRINCIPALI

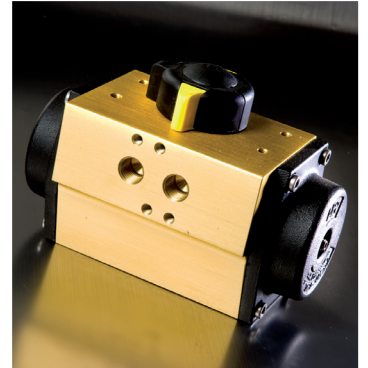
- Corpo in alluminio anodizzato oro per applicazioni in ambienti interni ed esterni
- Basso consumo d'aria
- Resistenza a ossidazione e usura
- Sistema pignone-cremagliera
- Ampio campo di pressioni di alimentazione
- Foratura inferiore per accoppiamento ISO5211 / DIN3337
- Foratura superiore, estremità albero e interfaccia per elettrovalvola VDI/VDE3845 Namur
- Lubrificazione a vita delle parti mobili
- Ampia gamma di accessori
- Certificato CE
- Certificato ATEX 94/9/EC

MAIN CHARACTERISTICS

- Gold-anodized aluminium body for indoor and outdoor applications
- Low air consumption
- Resistance to oxydation and wear
- Pinion-rack system
- Ample feeding pressure range
- Lower drilling for coupling ISO5211/DIN3337
- Upper drilling, stem end and interface for solenoid valve ISO5211 / DIN3337
- Lifelong lubrication of moving elements
- Complete range of accessories
- CE Certification
- ATEX 94/9/EC Certification

CARACTERÍSTICAS PRINCIPALES

- Cuerpo en aluminio anodizado con oro para aplicaciones internas y externas
- Bajo consumo de aire
- Resistencia a destaste y oxidación
- Sistema piñon-cremallera
- Amplo campo de presiones de alimentación
- Acoplamiento ISO5211/ DIN3337
- Acoplamiento con valvola de solenoide y arbol segun estandard ISO5211/DIN3337
- Lubrificación vitalizia de los elementos móviles
- Completa gama de accesorios
- Certificado CE
- Certificado ATEX 94/9/EC



ATTUATORE DOPPIO EFFETTO - Momento torcente (Nm)
DOUBLE-EFFECT ACTUATOR - Torque Moment (Nm)
ACTUADOR DOBLE EFECTO - Momento torcero (Nm)

Pressione di alimentazione - Feeding Pressure - Presion de alimentacion (bar)

Mod.	2	3	4	5	6	7	8
AP0D	2,4	3,6	4,8	6,0	7,3	8,5	9,7
AP1D	5,9	8,9	11,8	14,8	17,7	21,7	24,8
AP2D	9,4	14,1	18,8	23,5	28,2	32,9	37,6
AP3D	20,0	30,0	40,0	50,0	60,0	70,0	80,0
AP3.5D	34,0	51,0	68,0	85,0	102,0	119,0	136,0
AP4D	48,0	71,0	95,0	119,0	142,0	168,0	192,0
AP4.5D	87,2	130,8	174,4	218,0	261,6	305,2	348,8
AP5D	111,0	167,0	222,0	278,0	333,0	388,5	444,0
AP5.5D	157,6	236,4	315,3	394,1	473,0	551,8	630,6
AP6D	227,0	340,0	454,0	567,0	680,0	794,5	908,0
AP8D	426,0	638,0	851,0	1064,0	1276,0	1491,0	1704,0

I dati tecnici sono indicativi: il costruttore si riserva la facoltà di modificarli in qualsiasi momento senza alcun obbligo di preavviso.

Technical data are approximate and not binding for the manufacturer who reserves the right to change them without notice at any time.

Los datos tecnicos son indicativos: el constructor se reserva la facultad de modificar los datos en cualquier momento sin alguna obligación de preaviso.

ATTUATORE SEMPLICE EFFETTO - Momento torcente (Nm)
SINGLE-EFFECT ACTUATOR - Torque Moment (Nm)
ACTUADOR SIMPLE EFECTO - Momento torcerero (Nm)

Mod.	Nr. Molle Spring Nr. Nr. Muelles	Pressione di alimentazione - Feeding Pressure - Presion de alimentacion (bar)						Spinta Molle Spring Thrust Empuje Muelles	
		4		6		8		90°	0°
		0°	90°	0°	90°	0°	90°		
AP1S	4	7,0	4,8	12,9	10,7	20,0	17,8	7,0	4,8
	6	-	-	10,5	7,2	17,6	14,3	10,5	7,2
AP2SR	4	11,2	7,6	20,6	17,0	30,0	26,4	11,2	7,6
	6	-	-	16,8	11,4	26,2	20,8	16,8	11,4
AP3SR	4	24,0	16,0	44,0	36,0	64,0	56,0	24,0	16,0
	6	-	-	36,0	24,0	56,0	44,0	36,0	24,0
AP3.5SR	4	43,0	20,0	77,0	54,0	111,0	88,0	48,0	25,0
	6	-	-	64,0	39,0	106,4	73,0	63,0	38,0
AP4SR	4	58,0	38,0	105,0	85,0	155,0	132,0	57,0	37,0
	6	-	-	87,0	56,0	137,0	88,8	86,0	55,0
AP4.5SR	4	106,4	67,8	193,6	155,0	280,8	242,2	106,6	68,0
	6	72,4	14,4	159,6	101,6	246,8	188,8	160,0	102,0
AP5SR	4	136,0	87,0	247,0	198,0	358,0	309,0	135,0	86,0
	6	-	-	203,0	130,0	314,0	241,0	203,0	130,0
AP5.5SR	4	202,0	115,3	359,7	273,0	517,3	430,6	200,0	113,3
	6	145,3	15,3	303,0	173,0	460,6	330,6	300,0	170,0
AP6SR	4	287,0	174,0	513,0	400,0	741,0	628,0	280,0	167,0
	6	-	-	429,0	260,0	657,0	488,0	420,0	251,0
AP8SR	4	531,0	347,0	956,0	772,0	1384,0	1200,0	504,0	320,0
	6	-	-	796,0	520,0	1224,0	948,0	756,0	480,0

I dati tecnici sono indicativi: il costruttore si riserva la facoltà di modificarli in qualsiasi momento senza alcun obbligo di preavviso.

Technical data are approximate and not binding for the manufacturer who reserves the right to change them without notice at any time.

Los datos técnicos son indicativos: el constructor se reserva la facultad de modificar los datos en cualquier momento sin alguna obligación de preaviso.

MATERIALI

• Corpo:	Alluminio anodizzato
• Testate:	Alluminio pressofuso
• Albero:	Acciaio al carbonio
• Pistoni:	Alluminio pressofuso
• O Ring:	Buna N
• Molle:	Acciaio

MATERIALS

• Body:	Anodized Aluminium
• Heads:	Pressure die casting aluminium
• Stem:	Carbon steel
• Pistons:	Pressure die casting aluminium
• O Ring:	Buna N
• Springs:	Steel

MATERIALES

• Cuerpo:	Aluminio anodizado
• Cabezas:	Aluminio preñsofundido
• Arbol:	Acero de carbono
• Pistones:	Aluminio preñsofundido
• O Ring:	Buna N
• Muelles:	Acero

CARATTERISTICHE TECNICHE

• Taglia:	0 - 1 - 2 - 3 - 3,5 - 4 - 4,5 - 5 - 5,5 - 6 - 8 - 10
• Connessione Aria:	G 1/4"
• Fluido Alimentazione:	ARIA - GAS INERTI
• Pressione Alimentazione:	2-8 bar
• Temperatura Ambiente:	-20°C / +80°C -50°C / +100°C
• Connessioni:	ISO5211/DIN3337 VDI/VDE 3845, NAMUR

TECHNICAL CHARACTERISTICS

• Sizes:	0 - 1 - 2 - 3 - 3,5 - 4 - 4,5 - 5 - 5,5 - 6 - 8 - 10
• Feeding Connection:	G 1/4"
• Feeding Fluid:	AIR - NEUTRAL GASES
• Feeding Pressure:	2-8 bar
• Room Temperature:	-20°C / +80°C -50°C / +100°C
• Ends:	ISO5211/DIN3337 VDI/VDE 3845, NAMUR

CARACTERISTICAS TECNICAS

• Tamaño:	0 - 1 - 2 - 3 - 3,5 - 4 - 4,5 - 5 - 5,5 - 6 - 8 - 10
• Conexión Alimentación:	G 1/4"
• Fluido Alimentación:	AIRE - GAS NEUTROS
• Pressione Alimentación:	2-8 bar
• Temperatura Externa:	-20°C / +80°C -50°C / +100°C
• Extremos:	ISO5211/DIN3337 VDI/VDE 3845, NAMUR

ACCESSORI E OPZIONI

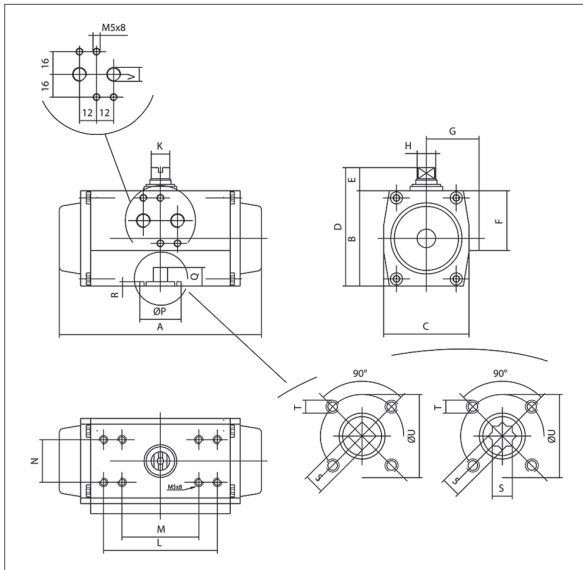
- Elettrovalvola pilota
- Controllo manuale
- Box porta-sensori
- Posizionatore pneumatico
- Posizionatore elettropneumatico

ACCESSORIES AND OPTIONS

- Pilot solenoid valve
- Manual control
- Switch box
- Pneumatic positioner
- Electropneumatic positioner

ACCESORIOS Y OPCIONES

- Electroválvula
- Control manual
- Box portasensores
- Posicionador neumático
- Posicionador electroneumático



QUADRI - SQUARES - CUADROS		
Mod.		ISO
AP0	9	F03
AP1	9	F03/F05
AP2	11	F04/F05
AP3	14	F05/F07
AP3.5	17	F07
AP4	17	F07/F10
AP4.5	22	F10
AP5	22	F10
AP5.5	27	F12
AP6	27	F12
AP8	36	F14

DIMENSIONI E PESI - DIMENSION AND WEIGHTS - DIMENSIONES Y PESOS

Attuatore Doppio Effetto - Double-effect Actuator - Actuador Doble Efecto

Mod.	A	B	C	D	E	F	G	H	K	L	M	N	P	Q	R	S	T	U	V	Kg
AP1D	137	67	60	87	20	42	41	12	8	-	80	30	25	10,00	2	9	M5/M6	36/50	1/8"	0,9
AP2D	150	83	73	103	20	42	44,5	12	8	-	80	30	30/35	12,00	2	11	M5/M6	42/50	1/4"	1,6
AP3D	204	100	85	120	20	50	49,5	14	10	-	80	30	35	16,00	3	14	M6/M8	50/70	1/4"	2,9
AP3.5D	230	110	98	130	20	50	53	19	14	-	80	30	55	20,00	3,5	17	M8	70	1/4"	4,2
AP4D	271	125	110	145	20	50	58	19	14	-	80	30	55	20,00	3,5	17	M8/M10	70/102	1/4"	5,9
AP4.5D	305	142	128	172	30	58	69	28	20	130	80	30	70	24,00	3,5	22	M10	102	1/4"	8,6
AP5D	360	155	140	185	30	-	-	28	20	130	80	30	70	24,00	3,5	22	M10	102	1/4"	11,2
AP5.5D	380	176	160	206	30	-	-	36	28	130	80	30	85	29,00	3,5	27	M12	125	1/4"	15,2
AP6D	462	200	175	230	30	-	-	36	28	130	80	30	85	29,00	3,5	27	M12	125	1/4"	21,2
AP8D	555	250	215	300	50	-	-	48	32	130	-	30	100	38,00	5	36	M16	140	1/4"	43,0

DIMENSIONI E PESI - DIMENSION AND WEIGHTS - DIMENSIONES Y PESOS

Attuatore Semplice Effetto - Single-effect Actuator - Actuador Simple Efecto

Mod.	A	B	C	D	E	F	G	H	K	L	M	N	P	Q	R	S	T	U	V	Kg
AP1S	137	67	60	87	20	42	41	12	8	-	80	30	25	10,00	2	9	M5/M6	36/50	1/8"	1,1
AP2S	150	83	73	103	20	42	44,5	12	8	-	80	30	30/35	12,00	2	11	M5/M6	42/50	1/4"	1,7
AP3S	204	100	85	120	20	50	49,5	14	10	-	80	30	35	16,00	3	14	M6/M8	50/70	1/4"	3,2
AP3.5S	230	110	98	130	20	50	53	19	14	-	80	30	55	20,00	3,5	17	M8	70	1/4"	4,7
AP4S	271	125	110	145	20	50	58	19	14	-	80	30	55	20,00	3,5	17	M8/M10	70/102	1/4"	6,3
AP4.5S	305	142	128	172	30	58	69	28	20	130	80	30	70	24,00	3,5	22	M10	102	1/4"	9,8
AP5S	360	155	140	185	30	-	-	28	20	130	80	30	70	24,00	3,5	22	M10	102	1/4"	13,1
AP5.5S	380	176	160	206	30	-	-	36	28	130	80	30	85	29,00	3,5	27	M12	125	1/4"	18,8
AP6S	462	200	175	230	30	-	-	36	28	130	80	30	85	29,00	3,5	27	M12	125	1/4"	24,6
AP8S	555	250	215	300	50	-	-	48	32	130	-	30	100	38,00	5	36	M16	140	1/4"	54,5